

ACTYON



ACTYON
SPORTS

More Power. More Fun.
Race Proven in New Zealand.

 **SSANGYONG**



NEW ACTYON SPORTS READY FOR WORK AND PLAY

A blend of dynamism and sophistication sets
New Actyon Sports apart in any environment.
Better utility, better comfort and better versatility
make this the exciting new ute of choice.

A new, more powerful engine, dynamic styling
and better fuel efficiency are all yours with this
exciting ute from SsangYong.

New Actyon Sports is equipped to boost your
performance at work and at play.

PROUDLY NEW ZEALAND OWNED

SsangYong New Zealand and all our SsangYong dealers
are 100% NZ owned and operated.



UTILITY IS MAXIMIZED BY VERSATILITY, CAPACITY AND POWER

New Actyon Sports has one of the most powerful engines in its class and is capable of towing loads as heavy as 2,500 kilograms. The cargo bed measures two square meters, and with the tailgate down, you get enough room to carry motorbikes, mountain bikes, skis, camping gear and other long or bulky objects.

And this rugged off-road performer is sure to get you to your destination comfortably and safely, when on the job or on vacation.



TRAVELLING IS MORE PLEASURABLE IN THE NEW CABIN

Fresh features have been installed inside the New Actyon Sports to enhance the comfort and enjoyment of the driver and passengers. Specifically, a Bluetooth switch has been added to the steering column to allow hands-free operation. The seats now come with a choice of natural leather, TPU or woven fabric covers, and the front seats are heated (Sports only). The new trip computer in the gauge cluster tracks your travel distance, travel time and fuel consumption, while the speed-sensitive power steering system self-adjusts the amount of steering assist necessary to enhance driving stability and control at any speed.



Reversing rear view camera (Sports only)

Bluetooth hands-free and audio functions

HDMI terminal for a portable device, connectable to the 7 inch colour display



Trip computer in the center of the LED cluster

Carbon pattern on and around the gearshift lever

Tilting power steering wheel with leather cover (Sports only)



Actyon 2.2 Sports interior shown



THE NEW ENGINE IS MORE POWERFUL AND ECONOMICAL

Improvements in the engine and transmission have enhanced the performance of New Actyon Sports, meaning still more value to you.

The reliable and capable 2.0 Diesel is a good allround workhorse while the 2.2 Diesel will provide those that need it, extra power for those extra big loads.



2.0L e-XDi diesel engine
155ps (114kW) 1,988cc



2.2L e-XDi diesel engine
178ps (130.9kW) 2,157cc



6-speed automatic (Diesel 2.2L) 5-speed automatic (Diesel 2.0L)

The transmission is optimally tuned for the high-performance engine. Power mode maximizes output, while in winter mode the driver can start out or back up in second gear to prevent slipping on snow or ice.



6-speed manual

The manual transmission with six forward gears, enhancing fuel efficiency, handling and eco-friendliness. The CO₂ level has been lowered to 196 g/km in rear-wheel drive and 199 g/km in part-time 4-wheel drive, which satisfies the tougher Euro 5 emission standards.



Manual mode

New Actyon Sports with automatic transmission features a sporty driving option. Switches on the gearshift knob let the driver shift gears up or down manually.

SAFETY AND DRIVEABILITY GO HAND IN HAND

The ability to venture forth both confidently and safely on any terrain under all conditions defines the true ute.

New Actyon Sports performs this role exceptionally well.

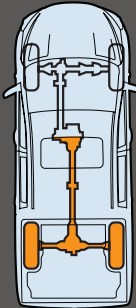


Airbags in front

The driver's seat and front passenger's seat are each equipped with their own front airbag.

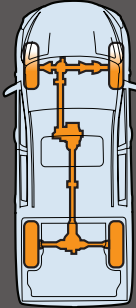
PART-TIME 4WD

This rugged off-road ute will allow you to go anywhere you want safely, through rivers or over rough terrain, at the push of a button.



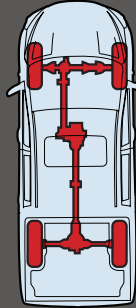
2WD high-gear mode

This saves fuel under normal driving conditions by lowering rolling resistance.



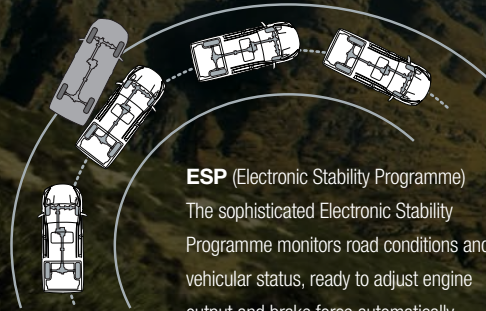
4WD high-gear mode

This enhances vehicular stability on rough or icy conditions.



4WD low-gear mode

This maximizes power at low speed.



ESP (Electronic Stability Programme)

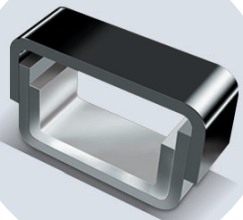
The sophisticated Electronic Stability Programme monitors road conditions and vehicular status, ready to adjust engine output and brake force automatically should the driver be in danger of losing control on wet or icy surfaces or in sharp turns at high speed.



Double-wishbone suspension in front combined with 5-link suspension in the rear



An ultra-rigid steel frame with triple-layer construction for maximum passive safety protection



FEATURES



Trip Computer



USB & Aux port



Bluetooth



Safety Power Window on driver's side



Deck Liner



Chrome Steering Wheel



Cruise Control (Selected Models only)



Headlamp Levelling Device (Sports)



ISO Fix & Tether Anchorage (Sports only)

AVAILABLE COLOURS



Indian Red



Marble Grey



Fine Silver



Grand White



Space Black

WHEEL OPTIONS



Sports only

Workmate only

THE SSANGYONG RACING SERIES IS NEW ZEALAND'S BIGGEST AND MOST COMPETITIVE ONE-MAKE RACING SERIES.



This popular Series kicked off back in September 2014 and each season runs over 7 rounds as a major support category to NZ's Premier Motor Racing Championship.

The SsangYong Racing Series is a strictly controlled category, which means that all of the Actyon Ute's must be exactly the same spec, with no variations – this means that in the end analysis it comes down to driver ability, and that has been proven over the first two seasons time and time again.

The engine is a 2.3 litre, 4-cylinder german engineered petrol unit driving the rear wheels, through a five-speed manual gearbox and LSD Differential. For Series Three in 2017, all of the SsangYong Racing Utes will race with a NZ designed and built TTI 4-Speed Sequential Gearbox. The suspension has been lowered and fitted with adjustable coil over dampers to further improve handling. The control tyre is a treaded road tyre suitable for both wet and dry conditions. Race compound brake pads are also fitted along with a cockpit mounted brake bias adjuster.

The SsangYong Racing Series has morphed into a competitive racing category for up-and-coming drivers looking to make their way up the motor racing ladder. The fact is that all motor racing costs money and as such there are very limited viable options available between Karting and Touring cars. This Series gives young racers a place to hone their craft – at a very affordable cost.



FEATURES LIST

	Workmate 2WD Manual	Workmate 2WD Auto	Workmate 4WD Manual	Workmate 4WD Auto	Sports 2.2 4WD Manual	Sports 2.2 4WD Auto
MECHANICAL						
2.0L e-XDi active diesel engine (155ps)	•	•	•	•		
2.2L e-XDi active diesel engine (178ps)					•	•
Part-time 4WD			•	•	•	•
6-speed manual transmission	•		•		•	
6-speed automatic transmission						•
5-speed automatic transmission		•		•		
Double-wishbone front suspension system with coil springs	•	•	•	•	•	•
Five-link rear suspension with coil springs	•	•	•	•	•	•
Hydraulic power steering	•	•	•	•	•	•
SAFETY						
Ultra-rigid frame for greater strength, less vibration and noise	•	•	•	•	•	•
Door impact beams for optimal protection from side collisions	•	•	•	•	•	•
Airbags for driver and front passenger	•	•	•	•	•	•
Seatbelt load limiters and pre-tensioners	•	•	•	•	•	•
4-channel anti-lock braking system	•	•	•	•	•	•
Electronic Stability Program (ESP) with ARP and HSA	•	•	•	•	•	•
Disc brakes on all 4 wheels	•	•	•	•	•	•
Front ventilated disc brakes	•	•	•	•	•	•
Door courtesy lamps	•	•	•	•	•	•
Front and rear fog lamps	•	•	•	•	•	•
Immobilizer system	•	•	•	•	•	•
Speed sensitive door lock	•	•	•	•	•	•
Collapsible steering column	•	•	•	•	•	•
ISO-FIX and tether anchorage for baby car seat					•	•
Seatbelt reminder for driver	•	•	•	•	•	•

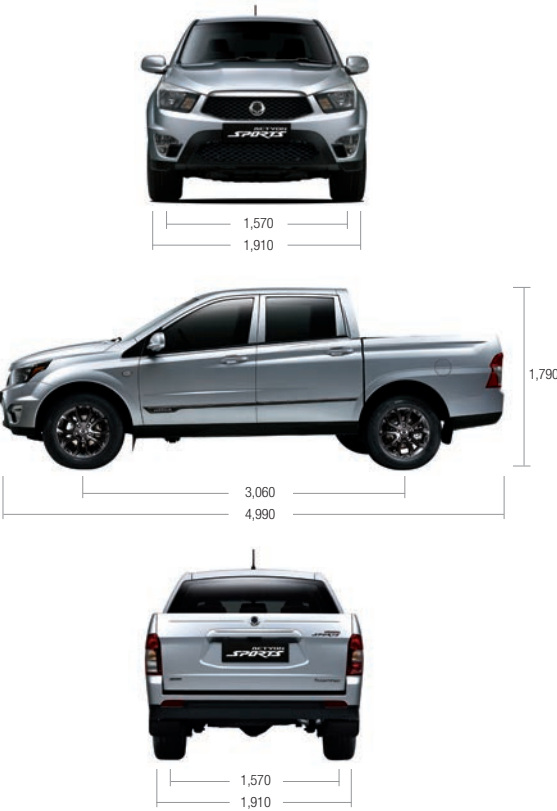
	Workmate 2WD Manual	Workmate 2WD Auto	Workmate 4WD Manual	Workmate 4WD Auto	Sports 2.2 4WD Manual	Sports 2.2 4WD Auto
APPEARANCE						
16" Steel wheels with 225/75 tyres	•	•	•	•		
18" Alloy wheels with 255/60 tyres (Black, No flange)					•	•
Full-sized spare tyre	•	•	•	•	•	•
Chrome and black radiator grille	•	•	•	•	•	•
Black bezel headlamps	•	•	•	•	•	•
Exterior door handles in body colour	•	•	•	•	•	•
Waist line molding - highlighted by a stainless steel insert	•	•	•	•	•	•
Pole antenna	•	•	•	•	•	•
LED side repeaters	•	•	•	•	•	•
Rubber blade wiper	•	•	•	•	•	•
Inside door handle - silver paint	•	•	•	•	•	•
PTC heater	•	•	•	•	•	•
CLIMATE CONTROL						
Manual air conditioning	•	•	•	•	•	•
Rear heating duct	•	•	•	•	•	•
SEATS						
Appealing sporty woven fabric seat covers	•	•	•	•		
Leatherette Interior					•	•
Heated front seats					•	•
2nd row seats with folding centre armrest	•	•	•	•	•	•
Front sliding headrest	•	•	•	•	•	•
Height adjustable driver's seat	•	•	•	•	•	•

	Workmate 2WD Manual	Workmate 2WD Auto	Workmate 4WD Manual	Workmate 4WD Auto	Sports 2.2 4WD Manual	Sports 2.2 4WD Auto
CONVENIENCE						
Cruise control system					•	•
Luxurious leather knob for gear shift lever					•	•
Luxurious leather cover for steering wheel					•	•
Floor mats	•	•	•	•	•	•
Dual remote keyless system (REKES) - folding type (Diesel)	•	•	•	•	•	•
2-Din audio system with mp3 and CD players	•	•	•	•		
USB & Aux. port	•	•	•	•	•	•
7 inch Media Centre with Reverse Camera					•	•
4 speakers	•	•	•	•	•	•
Bluetooth hands-free	•	•	•	•	•	•
Audio remote control switch on steering wheel	•	•	•	•	•	•
Heated and adjustable outside mirrors	•	•	•	•	•	•
Trip computer	•	•	•	•	•	•
Bed inner cover	•	•	•	•	•	•
Shopping bag hook	•	•	•	•	•	•
Heated rear glass with timer to defrost	•	•	•	•	•	•
Spray washer nozzle	•	•	•	•	•	•
Deluxe overhead console in easy reach	•	•	•	•	•	•
Digital clock on dashboard	•	•	•	•	•	•
Handy centre storage console	•	•	•	•	•	•
Cup and stationary holder in the console	•	•	•	•	•	•
Sun-visors with vanity mirror and illumination	•	•	•	•	•	•

* Some of features may be optional or not be available according to market. Please, contact your local dealer for the exact details regarding vehicles sold in your area.

MODEL RANGE			WORKMATE				SPORTS 2.2		
ENGINE			DIESEL 2.0 (CRDi)				DIESEL 2.2 (CRDi)		
DRIVEN WHEELS			2WD		4WD		4WD	4WD	
TRANSMISSION			6MT	5AT	6MT	5AT	6MT	6AT	
EMISSION			Euro 5				Euro 6		
EXTERIOR DIMENSION	Overall Length		mm	4,990					
	Overall width		mm	1,910					
	Overall height		mm	1,790					
	Tread	Front	mm	1,570					
		Rear	mm	1,570					
	Overhang	Front	mm	860					
		Rear	mm	1,070					
	Wheelbase		mm	3,060					
	Approach angle		degree	25					
	Departure angle		degree	25					
	Ramp angle		degree	20					
	Minimum clearance	Front	mm	188					
		Clear	mm	212					
	Min turning radius		m	6.2					
WEIGHT	Gross vehicle weight		kg	2,740					
	Kerb weight		kg	1,873~1,913	1,895~1,935	1,982~2,022	1,995~2,035	1,992~2,055	1,995~2,059
	Gross trailer weight	Braked	kg	2,500			2,500		
		Unbraked	kg	750			750		
ENGINE	Fuel		-	Diesel					
	Capacity		cc	1,998			2,157		
	Bore X Stroke		mm	86.2 X 85.6			86.2 X 92.4		
	Compression ratio		-	16.5 : 1			15.5 : 1		
	Number of cylinders		-	4 in-line					
PERFORMANCE	Max. power	kW/rpm	114 / 4,000				130.9 / 4,000		
		ps/rpm	155 / 4,000				178 / 4,000		
	Max. torque	Nm/rpm	360 / 1,500~2,800				400 / 1,400~2,800		
		kg.m/rpm	36.7 / 1,500~2,800				40.7 / 1,400~2,800		
	Hill startability		degree	22.6 / 30.9				22.6 / 30.9	
FUEL CONSUMPTION	CO2 (combined)	g/km	196/204		199/212		199/202		
	Combined	L/100km	7.3 / 7.8		7.4 / 7.9		7.6 / 7.7		

DIMENSIONS



- The fuel economy can vary according to road conditions or driver's habits.
- The above technical data can vary slightly by regional certification requirements or sales specifications.